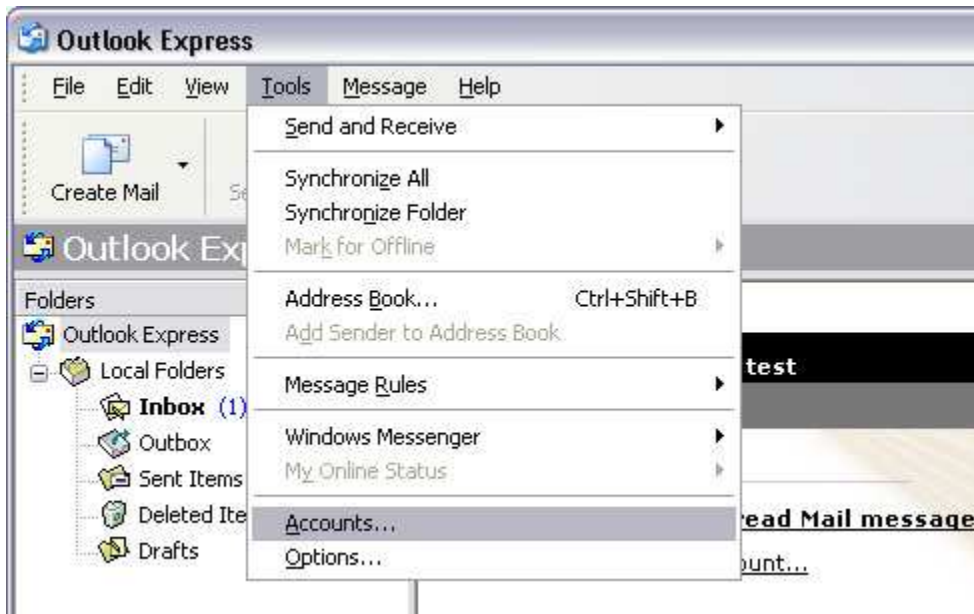


E-mail Setup for Outlook Express 5/6 100 Mile NetShop Ltd.

Print Guide

A step-by-step walkthrough

1) Open Outlook Express by clicking on **Start, Programs** (or All Programs), then **Outlook Express**. Once open, go to **Tools** then **Accounts**.



2) In the Internet Accounts window, press **Add** then click on **Mail**.



3) In the Internet Connection Wizard window, you will be asked to provide your **Display name**. Enter your real name here. Press **Next**.



The screenshot shows a window titled "Internet Connection Wizard" with a close button in the top right corner. The main heading is "Your Name". Below the heading is a mouse cursor icon. The text reads: "When you send e-mail, your name will appear in the From field of the outgoing message. Type your name as you would like it to appear." There is a text input field labeled "Display name:" containing the text "Your Name". Below the input field is the example text "For example: John Smith". At the bottom of the window are three buttons: "< Back", "Next >", and "Cancel".

4) Enter your **e-mail address** where it asks for it. Press **Next**.



5) Leave the incoming mail server as **POP3** at the top.

If you have a bcinternet.net e-mail address, enter **mail.bcinternet.net** for the **Incoming mail server**, and **smtp.bcinternet.net** for the **Outgoing mail server**.

If you have a bcwireless.com e-mail address, enter **mail.bcwireless.com** for the **Incoming mail server**, and **smtp.bcwireless.com** for the **Outgoing mail server**.

Press **Next**.

The screenshot shows a window titled "Internet Connection Wizard" with a close button in the top right corner. The main heading is "E-mail Server Names". Below this, there is a dropdown menu set to "POP3" with the text "My incoming mail server is a" on the left and "server." on the right. Underneath, a text box contains "mail.bcinternet.net" with the label "Incoming mail (POP3, IMAP or HTTP) server:". Below that, another text box contains "smtp.bcinternet.net" with the label "Outgoing mail (SMTP) server:". At the bottom of the window, there are three buttons: "< Back", "Next >", and "Cancel".

6) Enter your e-mail **Account name (username)** and e-mail **password** in the fields provided. Leave the Remember password box checked if desired.

DO NOT check the box where it says Log on using Secure Password Authentication.

Press **Next**.

Internet Connection Wizard [Close]

Internet Mail Logon [Help]

Type the account name and password your Internet service provider has given you.

Account name:

Password:

Remember password

If your Internet service provider requires you to use Secure Password Authentication (SPA) to access your mail account, select the 'Log On Using Secure Password Authentication (SPA)' check box.

Log on using Secure Password Authentication (SPA)

< Back Next > Cancel

7) Press **Finish** and you're all set!

Internet Connection Wizard



Congratulations



You have successfully entered all of the information required to set up your account.
To save these settings, click Finish.

< Back

Finish

Cancel