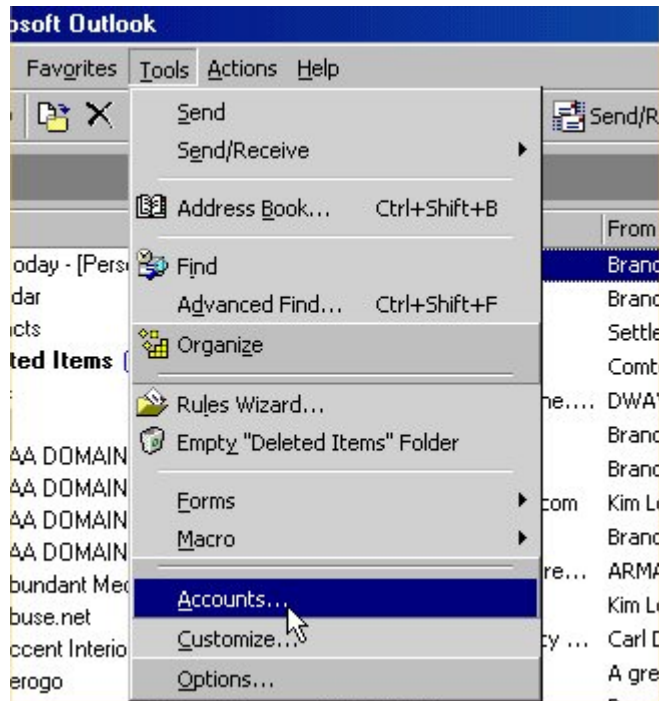


E-mail Setup for Microsoft Outlook 2000 100 Mile NetShop Ltd.

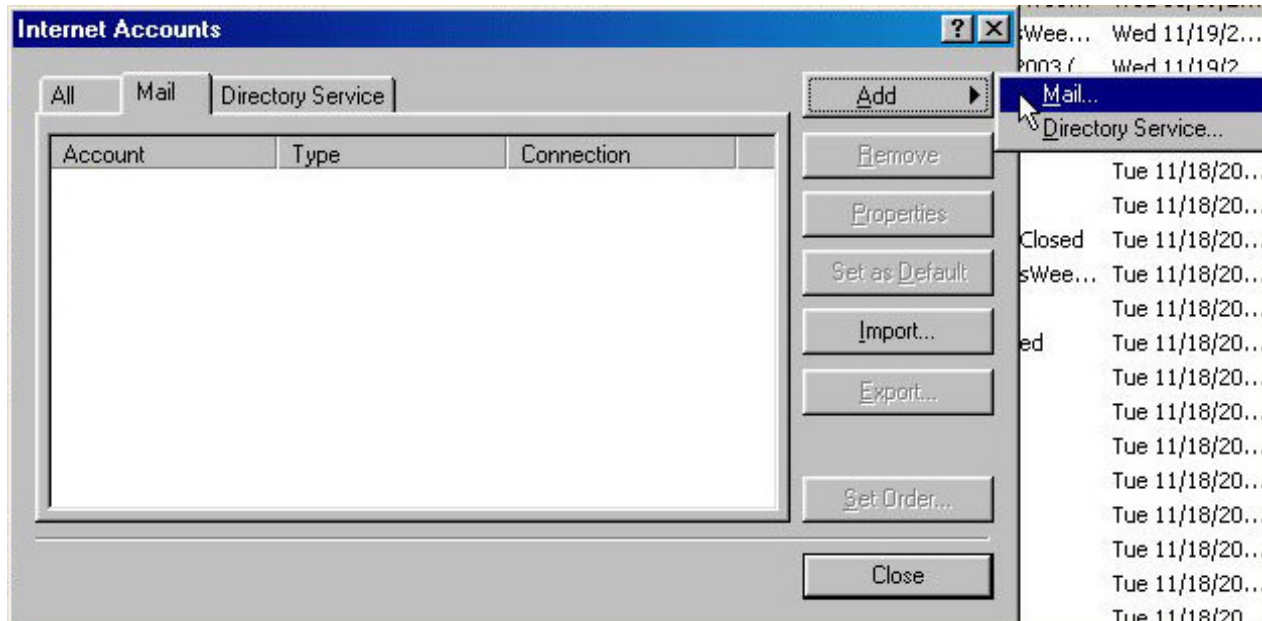
[Print Guide](#)

A step-by-step walkthrough

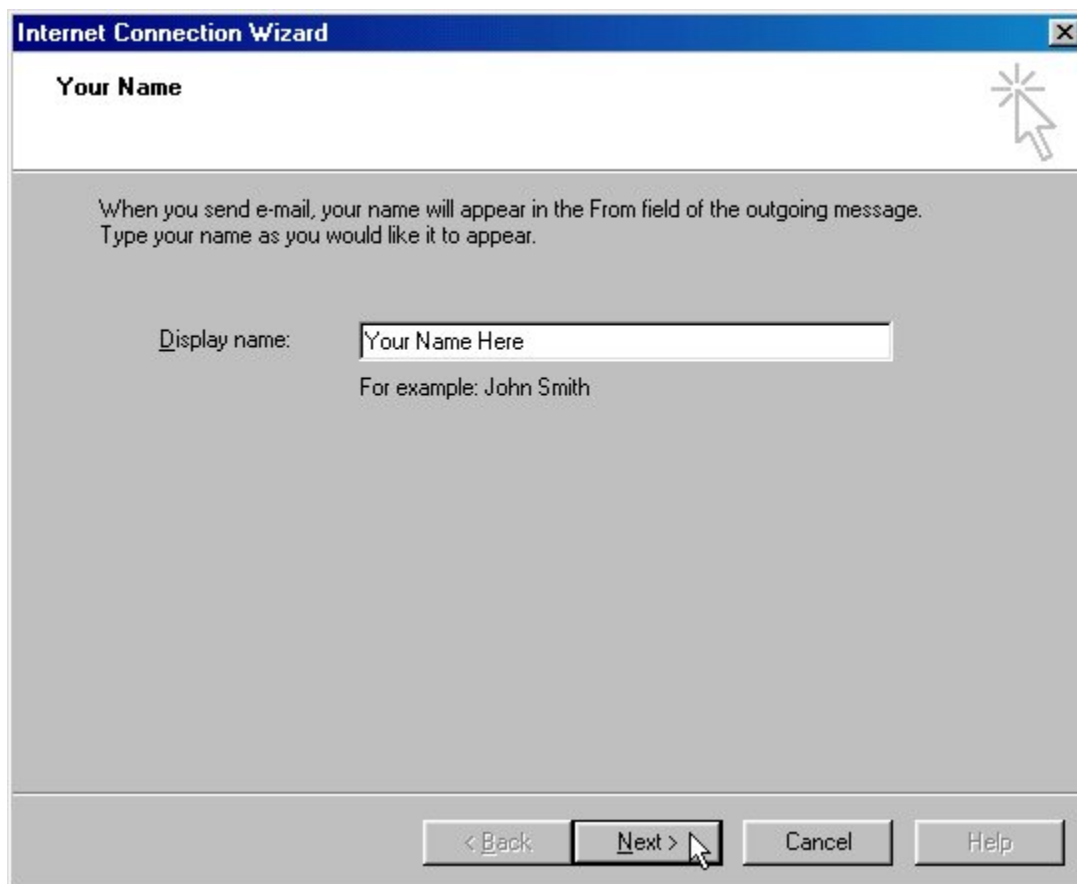
1) Go to **Tools** then **Accounts**.



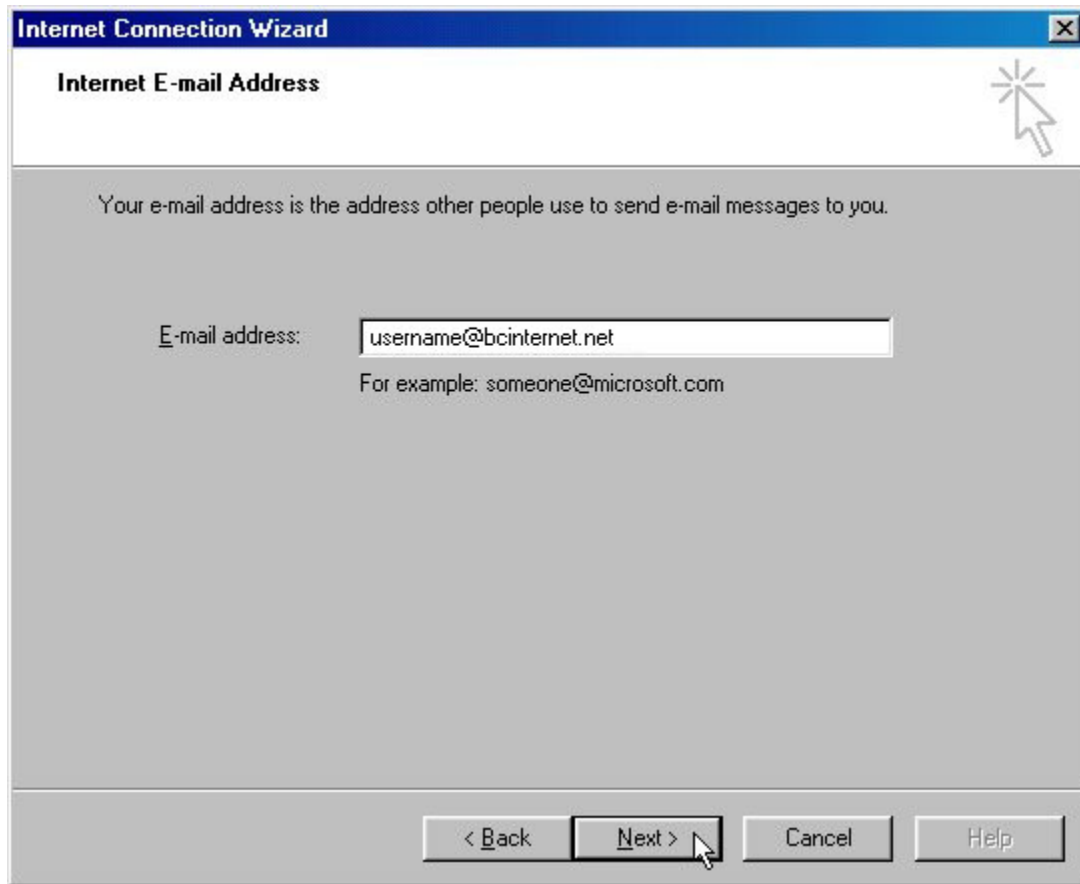
2) In the Internet Accounts window, press **Add** then click on **Mail**.



3) In the Internet Connection Wizard window, you will be asked to provide your **Display name**. Enter your real name here. Press **Next**.



4) Enter your **e-mail address** where it asks for it. Press **Next**.



The screenshot shows a Windows dialog box titled "Internet Connection Wizard" with a sub-header "Internet E-mail Address". The main text reads: "Your e-mail address is the address other people use to send e-mail messages to you." Below this is a text input field labeled "E-mail address:" containing the text "username@bcinternet.net". Underneath the input field is an example: "For example: someone@microsoft.com". At the bottom of the dialog are four buttons: "< Back", "Next >", "Cancel", and "Help". A mouse cursor is pointing at the "Next >" button.

5) Leave the incoming mail server as **POP3** at the top.

If you have a bcinternet.net e-mail address, enter **mail.bcinternet.net** for the **Incoming mail server**, and **smtp.bcinternet.net** for the **Outgoing mail server**.

If you have a bcwireless.com e-mail address, enter **mail.bcwireless.com** for the **Incoming mail server**, and **smtp.bcwireless.com** for the **Outgoing mail server**.

Press **Next**.

Internet Connection Wizard

E-mail Server Names

My incoming mail server is a server.

Incoming mail (POP3 or IMAP) server:

An SMTP server is the server that is used for your outgoing e-mail.
Outgoing mail (SMTP) server:

< Back Next > Cancel Help

6) Enter your e-mail **Account name (username)** and e-mail **password** in the fields provided. Leave the Remember password box checked if desired.

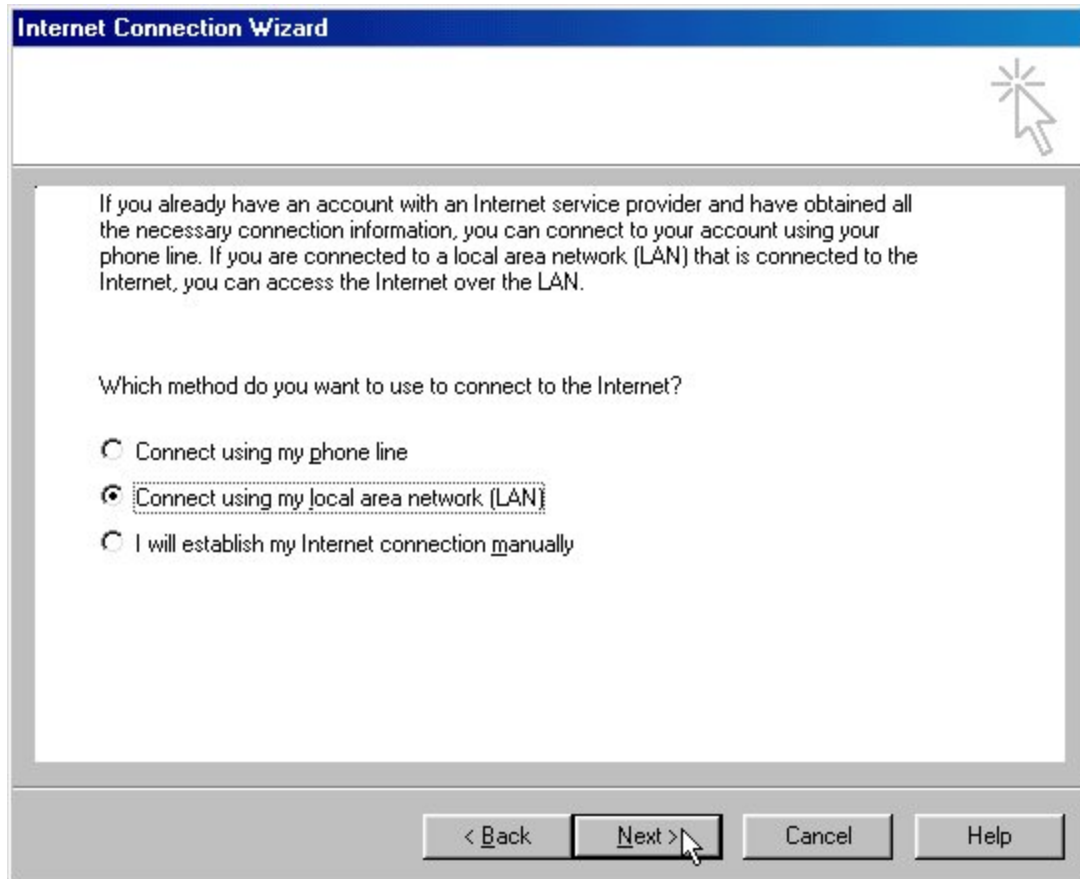
Note: DO NOT check the box where it says Log on using Secure Password Authentication.

Press **Next**.

The screenshot shows a Windows dialog box titled "Internet Connection Wizard" with a sub-header "Internet Mail Logon". The main area contains the following elements:

- Instruction: "Type the account name and password your Internet service provider has given you."
- Account name field: Labeled "Account name:" with a text box containing "username".
- Password field: Labeled "Password:" with a text box containing "Your Password".
- Remember password checkbox: A checked checkbox labeled "Remember password".
- SPA instruction: "If your Internet service provider requires you to use Secure Password Authentication (SPA) to access your mail account, select the 'Log On Using Secure Password Authentication (SPA)' check box."
- SPA checkbox: An unchecked checkbox labeled "Log on using Secure Password Authentication (SPA)".
- Navigation buttons: "< Back", "Next >", "Cancel", and "Help". A mouse cursor is pointing at the "Next >" button.

7) Select the connection type here. If you are on dial-up, select the option that says **Connect using my phone line**. If you are on high-speed, select the option that says **Connect using my local area network (LAN)**. Press **Next**.



8) Press **Finish** and you're all set!

Internet Connection Wizard

Congratulations



You have successfully entered all of the information required to set up your account.

To save these settings, click Finish.

< Back

Finish

Cancel

Help