

Connecting with Windows XP 100 Mile NetShop Ltd.

Print Guide

A step-by-step walkthrough

1) Click the **Start** button in the bottom left side of your desktop. Then move the mouse over to **Control Panel** and click (as seen below).



2) This will open the **Control Panel** window. Click on the **Network** icon (pictured below).



3) Double-click on the icon labeled **Network Connections**. This will bring up the window you see below. Double-click on **New Connection Wizard**.



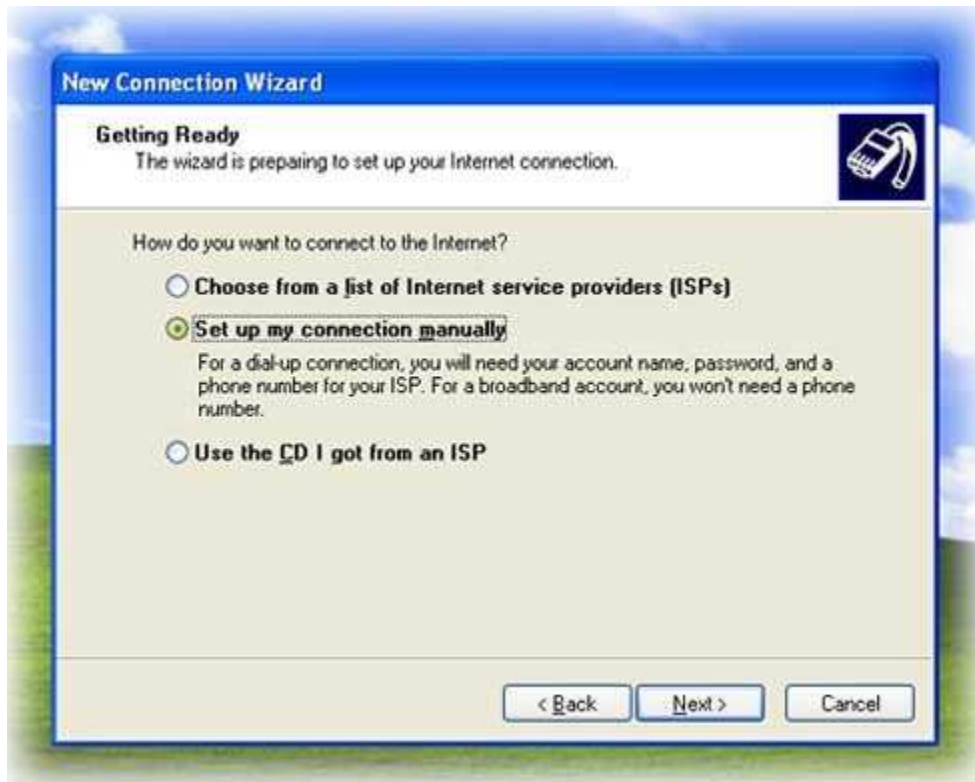
4) The **New Connection Wizard** will walk you through setting up a dial-up connection. Begin by clicking **Next**, located on the bottom right (seen below).



5) Next you will see the **Network Connection Type** window. Select Connect to the Internet by clicking in the circle next to it (as seen below). Click the **Next** button on the bottom right to continue.



6) This will take us to the **Getting Ready** window. You will see three choices there (as seen below). Please select the middle one labeled **Set up my connection manually** and then click **Next**.



7) The next window (seen below) is labeled **Internet Connection**. You will want to select the first option, **Connect using a dial-up modem**. Then click **Next** to continue.



8) This window is called **Connection Name**. Just type in **100 Mile NetShop** as seen below and click **Next**.



9) Now we should be in the **Phone Number to Dial** screen you see below. Type in **395-1925**. Once this is completed, click **Next**.



10) Next is the **Internet Account Information** screen. In this screen you will be adding in the **Username** and **Password** provided to you when you signed up. Then type in your password and make sure that the top two boxes below that are checked. Then click **Next**.



11) This should be the last window, labeled **Completing the New Connection Wizard**. In this window all you need to do is review what it says and check the box labeled **Add a shortcut to this connection to my desktop**. Click **Finish** and we are done.



Congratulations! You are ready to use your Dial-up.

There should now be an icon on your desktop. Just double click on the **icon** to connect. After you are connected, just double click on the **Internet Explorer** icon on your desktop (or **Start, All Programs, Internet Explorer**) and you will be on the web.